

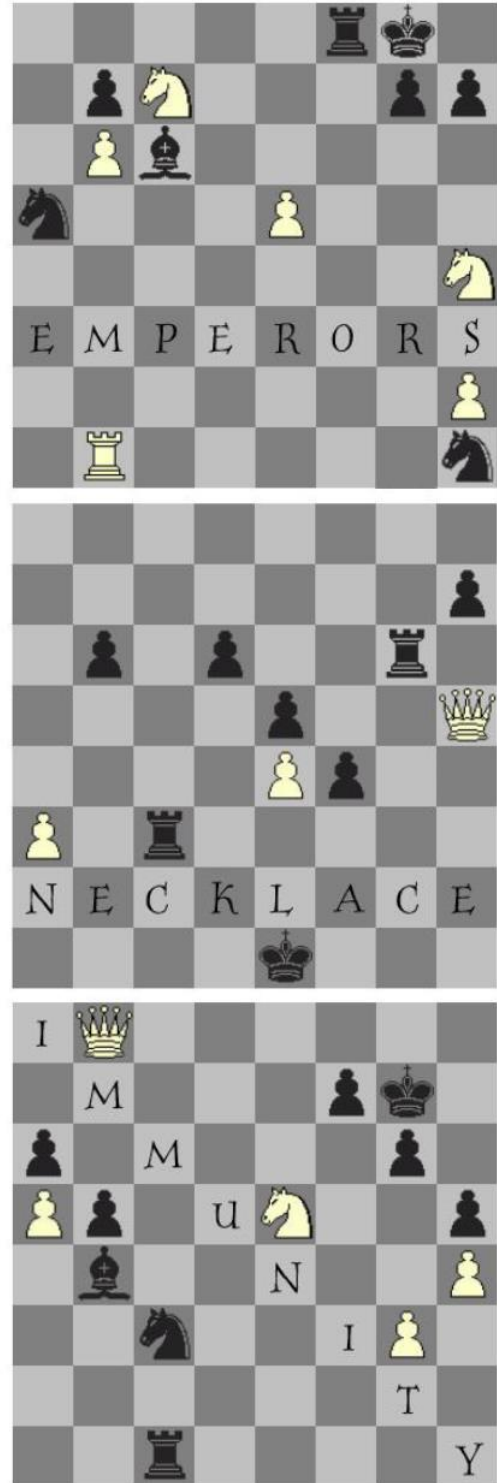
King's Cross Station [Switchback]

Difficulty ★☆☆☆

[Switchback - A Switchback is a puzzle that is based on a puzzle that appeared previously]

Outside the actual King's Cross Station in London, you see chess analysts hunched over a set of somewhat familiar-looking positions. (But since it is no longer Wizard's Chess, you reckon the missing White Kings are not relevant)

From here, what did you take to get to the next destination faster?



Singapore Puzzle Hunt 2021 – Around the World in 18 Puzzles

